

FY 2007

Northland College

Inst. ID 0403

Main Report - College and Campus Totals

Term: 20073

Room Capacity 3,947
 Seats Available in 32-Hour Week 126,304
 Seats Used in One Week 39,645
 Seat Usage Percent 31%

Seat Usage Percent = (Seats_Used /
 Seats_Avail_32_hour_week) * 100

Nbr Rooms Used 99
 Rooms * 32 Hours 3,168
 Hours Used Per Week 2,304
 Hours Usage Percent 73%

Hours Usage Percent =
 (Hours_Used_per_Week / Rooms_32_Hours)
 * 100

Totals by Institution

Campus Count 2
 Bldg Count 4
 Room Count 99

Course Count 596

Limits:

Univ Own Code: O

Facility Type: 110, 210

Definitions

Capc_ind (capacity indicator) = source is FC_ROOMS or class enrollment (when Room Capacity not code)

Nbr Rooms Used = rooms in use as classroom

Course Count is count of courses held within a given room. If a courses is held in two rooms it is counted as two courses (from the room's point of view, each room holds one course).

Building List -
Collegewide

This report includes
 no block

This report excludes courses with no Bldg Code,
 courses with no enrollment, courses not in session on
 1/30/2006, courses with no begin time. Optionally may exclude
 "block" courses.

BLDG_C ODE	BLDG_NAME	Campus Id of Bldg	FAC TYPE	UNIV_ OWN _COD E	Capc _ind	Room Capacity	Seats Used in One Week	Nbr Rooms Used	Hours Used per Week	Course Count
EGF	NTC East Grand Forks	265	110	O	FCR	1,462	18,571	31	912	270
			210	O	FCR	955	4,986	23	390	88
TRF	Main Building	303	110	O	FCR	923	9,360	23	505	144
			210	O	FCR	267	2,966	12	254	54
TRF_AV	Airport Campus	303	110	O	FCR	268	3,630	8	236	38
			210	O	FCR	18	60	1	3	1
TRF_SH	Swenson Hangar	303	210	O	FCR	54	72	1	4	1
Total						3,947	39,645	99	2,304	596

FY 2007

Northland College

265

E Grand Fork

Room Capacity 2,417

Seats Available in 32-Hour Week 77,344

Seats Used in One Week 23,557

Seat Usage Percent 30%

$$\text{Seat Usage Percent} = (\text{Seats_Used} / \text{Seats_Avail_32_hour_week}) * 100$$

Nbr Rooms Used 54

Rooms * 32 Hours 1,728

Hours Used Per Week 1,302

Hours Usage Percent 75%

$$\text{Hours Usage Percent} = (\text{Hours_Used_per_Week} / \text{Rooms_32_Hours}) * 100$$

Course Count 358

Totals by Campus

Bldg Count 1

Room Count 54

Building and Room List -
CAMPUS

BLDG_CO DE	BLDG_NAME	Camp us Id of Bldg	ROOM NBR	ROOM_NAME	Capc _ind	Room Capacity	Seats Used in One Week	Nbr Rooms Used	Hours Used per Week	Course Count
EGF	NTC East Grand Forks	265	124	Classroom - wired	FCR	30	757	1	27	7
			210	Classroom - wired	FCR	40	382	1	27	7
			211	Lab - Surgical Tec	FCR	15	216	1	16	2
			217	Classroom - wired	FCR	30	549	1	27	11
			218	Classroom - wired	FCR	32	731	1	29	8
			219	Classroom - wired	FCR	32	520	1	22	9
			222	Lab - Clinclal Labo	FCR	14	102	1	22	8
			228	Lab - Computer Sc	FCR	28	522	1	26	7
			229	Lab - Cardiovascu	FCR	10	68	1	17	2
			231	Classroom - wired	FCR	28	542	1	37	10
			234	Classroom - wired	FCR	48	1,234	1	41	15
			236	Classroom	FCR	40	1,032	1	45	12
			237	ITV - wired	FCR	24	342	1	26	9
			238	Classroom - wired	FCR	30	427	1	21	10
			239	Classroom - wired	FCR	32	502	1	36	8
			301	Classroom	FCR	24	742	1	38	9
			305A	Classroom - wired	FCR	40	333	1	15	4
			305B	Classroom - wired	FCR	40	664	1	33	9
			306A	Classroom	FCR	30	524	1	43	9
			308A	Lab - Medical Assi	FCR	12	184	1	26	4
			310	Lab - Radiologic T	FCR	16	66	1	6	2
			311	Conference Ctr W	FCR	28	18	1	4	2
			312	Lab - Pharmacy	FCR	20	88	1	8	2
			316	Lab - Occupationa	FCR	12	156	1	13	3
			317	Conference Ctr W	FCR	28	498	1	23	8
			320	Lab - Respiratory	FCR	24	355	1	33	7
			323	Lab - Science - wi	FCR	24	27	1	3	1
			327	Lab - Science - wi	FCR	24	90	1	10	2
			329	Classroom - wired	FCR	36	696	1	35	14

BLDG_CODE	BLDG_NAME	Campus Id of Bldg	ROOM_NBR	ROOM_NAME	Capc_ind	Room Capacity	Seats Used in One Week	Nbr Rooms Used	Hours Used per Week	Course Count
			331	Classroom - wired	FCR	36	599	1	28	10
			335	Lab - Early Childh	FCR	20	44	1	4	3
			337	Classroom	FCR	40	1,548	1	49	14
			339	Classroom	FCR	40	1,442	1	49	14
			341	Classroom	FCR	40	1,003	1	31	9
			401	Classroom - wired	FCR	32	378	1	20	11
			402A	Lab - Heating Ven	FCR	20	274	1	18	7
			402B	Lab - Plumbing	FCR	20	330	1	18	7
			402C	Lab - Construction	FCR	20	238	1	14	5
			410	Lab - Welding	FCR	20	359	1	17	4
			419	Lab - Auto Service	FCR	16	297	1	20	4
			421A	Classroom	FCR	40	130	1	6	3
				Classroom - wired	FCR		168	0	4	2
			421B	Lab - Const Elec a	FCR	25	194	1	10	3
			421C	Lab - Computer Se	FCR	25	84	1	4	1
			436	ITV - wired	FCR	18	394	1	31	7
			437	Classroom - wired	FCR	24	292	1	18	10
			440	Lab - Auto Service	FCR	30	256	1	12	2
			501	Lab - Fire Tech & I	FCR	30	128	1	16	2
			504	Lab - Carpentry	FCR	30	288	1	16	3
			506	Classroom	FCR	16	244	1	18	4
			507	Classroom	FCR	20	402	1	39	8
			508	Classroom	FCR	40	932	1	48	13
			HWL	Classroom - Fine /	FCR	24	138	1	6	1
			SITE	Job Site	FCR	500	620	1	61	7
			TBA	To Be Announced	FCR	500	408	1	36	3
Total						2,417	23,557	54	1,302	358

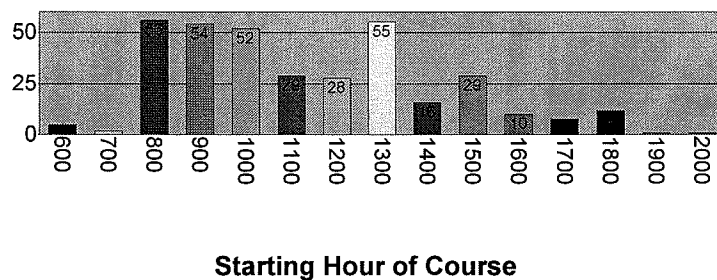
265

E Grand Fork

Northland College

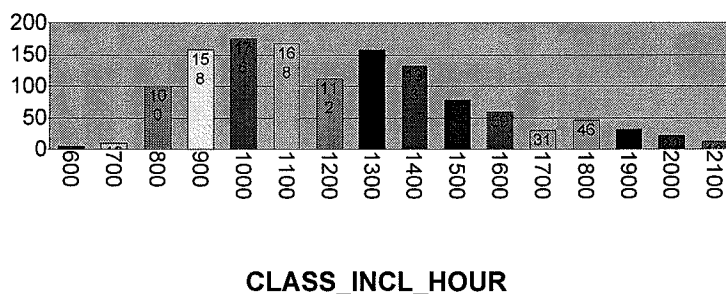
Total count uniquecourse

(a) Courses by Starting Hour



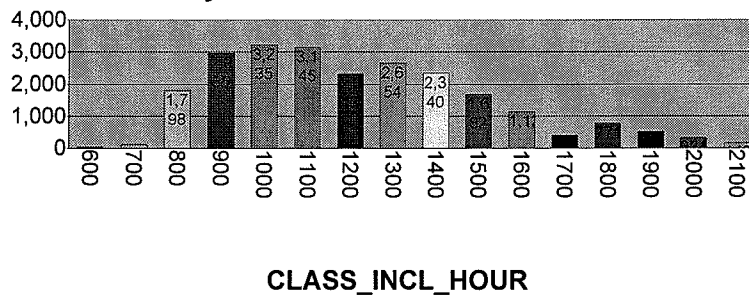
Total Computed_all_days

(b) Hours/Courses When Bldg/Room is in Use by Hours in Session



Total Seats

(c) Seats Occupied Weekly Total by Hours in Session



FY 2007

Northland College

303

Thief River

Room Capacity 1,530

Seats Available in 32-Hour Week 48,960

Seats Used in One Week 16,088

Seat Usage Percent 33%

$$\text{Seat Usage Percent} = (\text{Seats_Used} / \text{Seats_Avail_32_hour_week}) * 100$$

Nbr Rooms Used 45

Rooms * 32 Hours 1,440

Hours Used Per Week 1,002

Hours Usage Percent 70%

$$\text{Hours Usage Percent} = (\text{Hours_Used_per_Week} / \text{Rooms_32_Hours}) * 100$$

Course Count 238

Totals by Campus

Bldg Count 3

Room Count 45

Building and Room List -
CAMPUS

BLDG_CO DE	BLDG_NAME	Camp us Id of Bldg	ROOM NBR	ROOM_NAME	Capc _ind	Room Capacity	Seats Used in One Week	Nbr Rooms Used	Hours Used per Week	Course Count
TRF	Main Building	303	105	Lab - Biology	FCR	37	14	1	2	1
			109	Classroom - Natur	FCR	30	26	1	4	2
			115	Classroom	FCR	30	262	1	14	4
			117	Classroom	FCR	50	538	1	27	9
			201	Classroom	FCR	55	607	1	21	6
			203	Classroom	FCR	55	599	1	19	6
			215	Classroom	FCR	30	321	1	21	7
			219	Classroom	FCR	28	644	1	33	10
			225	Classroom	FCR	42	719	1	33	10
			263	Lab - Computer	FCR	24	414	1	22	6
			323	Classroom	FCR	32	254	1	13	4
			325	ITV (middle)	FCR	45	302	1	34	8
			329	ITV (corner)	FCR	34	137	1	17	5
			407	Music-Band Rehe	FCR	50	166	1	12	4
			431	Art Room	FCR	14	50	1	5	1
			445	Lab - Art	FCR	28	123	1	9	2
			515	Classroom	FCR	46	590	1	23	7
			551	Classroom	FCR	32	124	1	8	2
			601	Classroom (SS Ar	FCR	54	502	1	22	6
			603	Lab - Computer	FCR	24	282	1	28	8
			623	Lab - Radio/TV Br	FCR	9	128	1	15	4
			627	Classroom - Nursi	FCR	46	895	1	46	11
			631	Lab - Nursing	FCR	15	68	1	8	2
			651	Lab - Welding	FCR	25	180	1	16	3
			655	Lab - Cosmetology	FCR	32	465	1	55	9
			701	Classroom	FCR	42	488	1	32	13
			703	Classroom	FCR	46	430	1	25	8
			705	Lab - Architectural	FCR	20	338	1	22	4
			706	Lab - Architectural	FCR	15	285	1	22	5

Main Rpt - College and Campus

BLDG_CO DE	BLDG_NAME	Camp us Id of Bldg	ROOM_ NBR	ROOM_NAME	Capc ind	Room Capacity	Seats Used in One Week	Nbr Rooms Used	Hours Used per Week	Course Count
			707	Lab - Architectural	FCR	24	489	1	40	8
			715	Classroom - Auto	FCR	22	327	1	19	5
			719C	Lab - Auto Body II	FCR	14	180	1	15	2
			723	Classroom - Auto	FCR	20	150	1	15	3
			729	Classroom - Auto	FCR	20	282	1	22	5
			ARR	Arranged	FCR	100	947	1	40	8
TRF_AV	Airport Campus	303	AC10	Classroom - Aviati	FCR	28	520	1	32	3
			AC11	Classroom - Aviati	FCR	48	436	1	30	6
			AC12	Classroom - Aviati	FCR	48	687	1	30	7
			AC14	Classroom - Elect	FCR	24	412	1	27	5
			AC2	Classroom - Aviati	FCR	24	378	1	25	3
			AC3	Classroom - Aviati	FCR	22	382	1	34	3
			AC6	Lab - Aviation	FCR	18	60	1	3	1
			AC8	Classroom - Aviati	FCR	48	283	1	28	3
			AC9	Classroom - Aviati	FCR	26	532	1	30	8
TRF_SH	Swenson Han	303	SH1	Swenson Airplane	FCR	54	72	1	4	1
Total						1,530	16,088	45	1,002	238

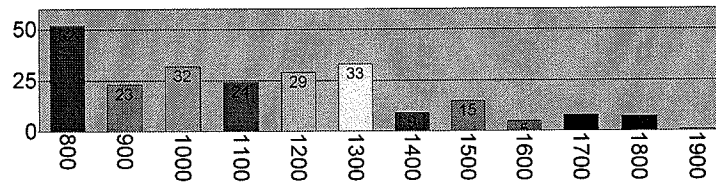
303

Thief River

Northland College

(a) Courses by Starting Hour

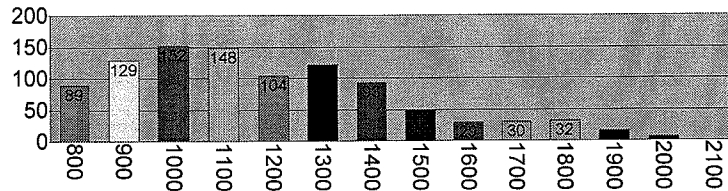
Total count uniquecourse



Starting Hour of Course

(b) Hours/Courses When Bldg/Room is in Use by Hours in Session

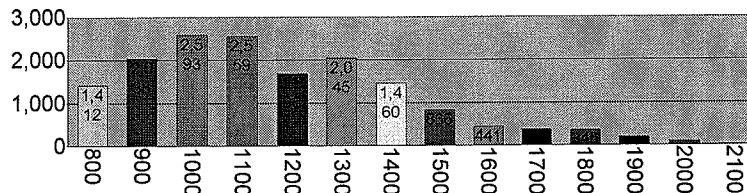
Total Computed_all_days



CLASS_INCL_HOUR

(c) Seats Occupied Weekly Total by Hours in Session

Total Seats



CLASS_INCL_HOUR

Bldg Code **EGF****NTC East Grand Forks****Northland College**

Fac Type	110, 210	Room Capacity	2,417	Nbr Rooms Used	54
Classroom Lab, Lecture Classroom		Seats Available in 32-Hour Week	77,344	Rooms * 32 Hours	1,728
O		Seats Used in One Week	23,557	Hours Used Per Week	1,302
265 E Grand Fork		Seat Usage Percent	30%	Hours Usage Percent	75% *
				Course Count	358

BLDG TOTALS
Totals; Rooms**Totals by Building**

20073

Room Count 54

* If Hours Usage Percent (above) is greater than 100%, see list of courses held in this building (below) and/or see "Bldg and Room Totals" Report; verify location and time. Changes must be made within the ISRS system and the DataWarehouse staff must be notified to repull the data.

Rooms in This Building

BLDG CODE	ROOM NBR	ROOM_NAME	Capc ind	MULTIPLIER -UNIQUE-R	Seats Avail 32 hr	Seats Used in One Week	Seat Usage Percent	Nbr of Rooms	Rooms * 32 Hours	Hours Used per Week	Hours Usage Percent	Course Count
EGF	124	Classroom - wirec	FCR	30	960	757	79%	1	32	27	84%	7
	210	Classroom - wirec	FCR	40	1,280	382	30%	1	32	27	84%	7
	211	Lab - Surgical Tec	FCR	15	480	216	45%	1	32	16	50%	2
	217	Classroom - wirec	FCR	30	960	549	57%	1	32	27	84%	11
	218	Classroom - wirec	FCR	32	1,024	731	71%	1	32	29	91%	8
	219	Classroom - wirec	FCR	32	1,024	520	51%	1	32	22	69%	9
	222	Lab - Clincl Labc	FCR	14	448	102	23%	1	32	22	69%	8
	228	Lab - Computer S	FCR	28	896	522	58%	1	32	26	81%	7
	229	Lab - Cardiovasc	FCR	10	320	68	21%	1	32	17	53%	2
	231	Classroom - wirec	FCR	28	896	542	60%	1	32	37	116%	10
	234	Classroom - wirec	FCR	48	1,536	1,234	80%	1	32	41	128%	15
	236	Classroom	FCR	40	1,280	1,032	81%	1	32	45	141%	12
	237	ITV - wired	FCR	24	768	342	45%	1	32	26	81%	9
	238	Classroom - wirec	FCR	30	960	427	44%	1	32	21	66%	10
	239	Classroom - wirec	FCR	32	1,024	502	49%	1	32	36	113%	8
	301	Classroom	FCR	24	768	742	97%	1	32	38	119%	9
	305A	Classroom - wirec	FCR	40	1,280	333	26%	1	32	15	47%	4
	305B	Classroom - wirec	FCR	40	1,280	664	52%	1	32	33	103%	9
	306A	Classroom	FCR	30	960	524	55%	1	32	43	134%	9
	308A	Lab - Medical Ass	FCR	12	384	184	48%	1	32	26	81%	4
	310	Lab - Radiologic	FCR	16	512	66	13%	1	32	6	19%	2
	311	Conference Ctr W	FCR	28	896	18	2%	1	32	4	13%	2
	312	Lab - Pharmacy	FCR	20	640	88	14%	1	32	8	25%	2
	316	Lab - Occupation	FCR	12	384	156	41%	1	32	13	41%	3
	317	Conference Ctr W	FCR	28	896	498	56%	1	32	23	72%	8
	320	Lab - Respiratory	FCR	24	768	355	46%	1	32	33	103%	7
	323	Lab - Science - w	FCR	24	768	27	4%	1	32	3	9%	1
	327	Lab - Science - w	FCR	24	768	90	12%	1	32	10	31%	2
	329	Classroom - wirec	FCR	36	1,152	696	60%	1	32	35	109%	14
	331	Classroom - wirec	FCR	36	1,152	599	52%	1	32	28	88%	10

(short rpt) Bldg Totals - short form

BLDG CODE	ROOM NBR	ROOM_NAME	Capc ind	MULTI PLIER -UNIQ UE-R	Seats Avail 32 hr	Seats Used in One Week	Seat Usage Percent	Nbr of Rooms	Rooms * 32 Hours	Hours Used per Week	Hours Usage Percent	Course Count
	335	Lab - Early Child	FCR	20	640	44	7%	1	32	4	13%	3
	337	Classroom	FCR	40	1,280	1,548	121%	1	32	49	153%	14
	339	Classroom	FCR	40	1,280	1,442	113%	1	32	49	153%	14
	341	Classroom	FCR	40	1,280	1,003	78%	1	32	31	97%	9
	401	Classroom - wired	FCR	32	1,024	378	37%	1	32	20	63%	11
	402A	Lab - Heating Ver	FCR	20	640	274	43%	1	32	18	56%	7
	402B	Lab - Plumbing	FCR	20	640	330	52%	1	32	18	56%	7
	402C	Lab - Construction	FCR	20	640	238	37%	1	32	14	44%	5
	410	Lab - Welding	FCR	20	640	359	56%	1	32	17	53%	4
	419	Lab - Auto Service	FCR	16	512	297	58%	1	32	20	63%	4
	421A	Classroom	FCR	40	1,280	130	10%	1	32	6	19%	3
		Classroom - wired	FCR			168		0	0	4	#INF	2
	421B	Lab - Const Elec	FCR	25	800	194	24%	1	32	10	31%	3
	421C	Lab - Computer S	FCR	25	800	84	11%	1	32	4	13%	1
	436	ITV - wired	FCR	18	576	394	68%	1	32	31	97%	7
	437	Classroom - wired	FCR	24	768	292	38%	1	32	18	56%	10
	440	Lab - Auto Service	FCR	30	960	256	27%	1	32	12	38%	2
	501	Lab - Fire Tech &	FCR	30	960	128	13%	1	32	16	50%	2
	504	Lab - Carpentry	FCR	30	960	288	30%	1	32	16	50%	3
	506	Classroom	FCR	16	512	244	48%	1	32	18	56%	4
	507	Classroom	FCR	20	640	402	63%	1	32	39	122%	8
	508	Classroom	FCR	40	1,280	932	73%	1	32	48	150%	13
	HWL	Classroom - Fine	FCR	24	768	138	18%	1	32	6	19%	1
	SITE	Job Site	FCR	500	16,000	620	4%	1	32	61	191%	7
	TBA	To Be Announced	FCR	500	16,000	408	3%	1	32	36	113%	3
Total				2,417	77,344	23,557	30%	54	1,728	1,302	75%	358

Bldg Code **TRF****Main Building****Northland College**

Room Capacity	1,190	Nbr Rooms Used	35
Fac Type 110, 210	Seats Available in 32-Hour Week	38,080	Rooms * 32 Hours
Classroom Lab, Lecture Classroom	Seats Used in One Week	12,326	Hours Used Per Week
O	Seat Usage Percent	32%	Hours Usage Percent
303 Thief River			68% *
			Course Count
			198

BLDG TOTALS
Totals; Rooms

Totals by Building

20073

Room Count 35

*

If Hours Usage Percent (above) is greater than 100%, see list of courses held in this building (below) and/or see "Bldg and Room Totals" Report; verify location and time. Changes must be made within the ISRS system and the DataWarehouse staff must be notified to repull the data.

Rooms in This Building

BLDG CODE	ROOM NBR	ROOM_NAME	Capc Ind	MULTIPLIER -UNIQUE-R	Seats Avail 32 hr	Seats Used in One Week	Seat Usage Percent	Nbr of Rooms	Rooms * 32 Hours	Hours Used per Week	Hours Usage Percent	Course Count
TRF	105	Lab - Biology	FCR	37	1,184	14	1%	1	32	2	6%	1
	109	Classroom - Natu	FCR	30	960	26	3%	1	32	4	13%	2
	115	Classroom	FCR	30	960	262	27%	1	32	14	44%	4
	117	Classroom	FCR	50	1,600	538	34%	1	32	27	84%	9
	201	Classroom	FCR	55	1,760	607	34%	1	32	21	66%	6
	203	Classroom	FCR	55	1,760	599	34%	1	32	19	59%	6
	215	Classroom	FCR	30	960	321	33%	1	32	21	66%	7
	219	Classroom	FCR	28	896	644	72%	1	32	33	103%	10
	225	Classroom	FCR	42	1,344	719	53%	1	32	33	103%	10
	263	Lab - Computer	FCR	24	768	414	54%	1	32	22	69%	6
	323	Classroom	FCR	32	1,024	254	25%	1	32	13	41%	4
	325	ITV (middle)	FCR	45	1,440	302	21%	1	32	34	106%	8
	329	ITV (corner)	FCR	34	1,088	137	13%	1	32	17	53%	5
	407	Music-Band Rehe	FCR	50	1,600	166	10%	1	32	12	38%	4
	431	Art Room	FCR	14	448	50	11%	1	32	5	16%	1
	445	Lab - Art	FCR	28	896	123	14%	1	32	9	28%	2
	515	Classroom	FCR	46	1,472	590	40%	1	32	23	72%	7
	551	Classroom	FCR	32	1,024	124	12%	1	32	8	25%	2
	601	Classroom (SS A)	FCR	54	1,728	502	29%	1	32	22	69%	6
	603	Lab - Computer	FCR	24	768	282	37%	1	32	28	88%	8
	623	Lab - Radio/TV B	FCR	9	288	128	44%	1	32	15	47%	4
	627	Classroom - Nurs	FCR	46	1,472	895	61%	1	32	46	144%	11
	631	Lab - Nursing	FCR	15	480	68	14%	1	32	8	25%	2
	651	Lab - Welding	FCR	25	800	180	23%	1	32	16	50%	3
	655	Lab - Cosmetolog	FCR	32	1,024	465	45%	1	32	55	172%	9
	701	Classroom	FCR	42	1,344	488	36%	1	32	32	100%	13
	703	Classroom	FCR	46	1,472	430	29%	1	32	25	78%	8
	705	Lab - Architectura	FCR	20	640	338	53%	1	32	22	69%	4
	706	Lab - Architectura	FCR	15	480	285	59%	1	32	22	69%	5
	707	Lab - Architectura	FCR	24	768	489	64%	1	32	40	125%	8

(short rpt)Bldg Totals - short form

BLDG CODE	ROOM _NBR	ROOM_NAME	Capc _ind	MULTI PLIER -UNIQ UE-R	Seats Avail 32 hr	Seats Used in One Week	Seat Usage Percent	Nbr of Rooms	Rooms * 32 Hours	Hours Used per Week	Hours Usage Percent	Course Count
	715	Classroom - Auto	FCR	22	704	327	46%	1	32	19	59%	5
	719C	Lab - Auto Body I	FCR	14	448	180	40%	1	32	15	47%	2
	723	Classroom - Auto	FCR	20	640	150	23%	1	32	15	47%	3
	729	Classroom - Auto	FCR	20	640	282	44%	1	32	22	69%	5
	ARR	Arranged	FCR	100	3,200	947	30%	1	32	40	125%	8
Total				1,190	38,080	12,326	32%	35	1,120	759	68%	198

Bldg Code **TRF_AV Airport Campus****Northland College**

Room Capacity	286	Nbr Rooms Used	9
Fac Type 110, 210	Seats Available in 32-Hour Week	9,152	Rooms * 32 Hours
Classroom Lab, Lecture Classroom	Seats Used in One Week	3,690	Hours Used Per Week
0	Seat Usage Percent	40%	Hours Usage Percent
303 Thief River			83% *
			Course Count
			39

BLDG TOTALS
Totals; Rooms**Totals by Building**

20073

Room Count 9

*

If Hours Usage Percent (above) is greater than 100%, see list of courses held in this building (below) and/or see "Bldg and Room Totals" Report; verify location and time. Changes must be made within the ISRS system and the DataWarehouse staff must be notified to repull the data.

Rooms in This Building

BLDG CODE	ROOM_NBR	ROOM_NAME	Capc ind	MULTIPLIER -UNIQUE-R	Seats Avail 32 hr	Seats Used in One Week	Seat Usage Percent	Nbr of Rooms	Rooms * 32 Hours	Hours Used per Week	Hours Usage Percent	Course Count
TRF_AV	AC10	Classroom - Avial	FCR	28	896	520	58%	1	32	32	100%	3
	AC11	Classroom - Avial	FCR	48	1,536	436	28%	1	32	30	94%	6
	AC12	Classroom - Avial	FCR	48	1,536	687	45%	1	32	30	94%	7
	AC14	Classroom - Elect	FCR	24	768	412	54%	1	32	27	84%	5
	AC2	Classroom - Avial	FCR	24	768	378	49%	1	32	25	78%	3
	AC3	Classroom - Avial	FCR	22	704	382	54%	1	32	34	106%	3
	AC6	Lab - Aviation	FCR	18	576	60	10%	1	32	3	9%	1
	AC8	Classroom - Avial	FCR	48	1,536	283	18%	1	32	28	88%	3
	AC9	Classroom - Avial	FCR	26	832	532	64%	1	32	30	94%	8
Total				286	9,152	3,690	40%	9	288	239	83%	39

Bldg Code **TRF_SH Swenson Hangar****Northland College**

Room Capacity	54	Nbr Rooms Used	1
Fac Type 210	Seats Available in 32-Hour Week	1,728	Rooms * 32 Hours
Classroom Lab	Seats Used in One Week	72	Hours Used Per Week
O	Seat Usage Percent	4%	Hours Usage Percent
303 Thief River			13% *
		Course Count	1

BLDG TOTALS
Totals; Rooms**Totals by Building**

20073

Room Count 1

*

If Hours Usage Percent (above) is greater than 100%, see list of courses held in this building (below) and/or see "Bldg and Room Totals" Report; verify location and time. Changes must be made within the ISRS system and the DataWarehouse staff must be notified to repull the data.

Rooms in This Building

BLDG_CODE	ROOM_NBR	ROOM_NAME	Capc_ind	MULTIPLIER -UNIQ UE-R	Seats Avail 32 hr	Seats Used in One Week	Seat Usage Percent	Nbr of Rooms	Rooms * 32 Hours	Hours Used per Week	Hours Usage Percent	Course Count
TRF_SF	SH1	Swenson Airplane	FCR	54	1,728	72	4%	1	32	4	13%	1
Total				54	1,728	72	4%	1	32	4	13%	1