

FY 2007

Northland College

Inst. ID 0403

Main Report - College and Campus Totals

Term: 20075

Room Capacity 3,879
 Seats Available in 32-Hour Week 124,128
 Seats Used in One Week 39,025
 Seat Usage Percent 31%

Seat Usage Percent = (Seats_Used /
 Seats_Avail_32_hour_week) * 100

Nbr Rooms Used 100
 Rooms * 32 Hours 3,200
 Hours Used Per Week 2,494
 Hours Usage Percent 78%

Hours Usage Percent =
 (Hours_Used_per_Week / Rooms_32_Hours)
 * 100

Totals by Institution

Campus Count 2
 Bldg Count 4
 Room Count 100

Course Count 625

Limits:

Univ Own Code: O

Facility Type: 110, 210

Definitions

Capc_ind (capacity indicator) = source is FC_ROOMS or class enrollment (when Room Capacity not code)

Nbr Rooms Used = rooms in use as classroom

Course Count is count of courses held within a given room. If a courses is held in two rooms it is counted as two courses (from the room's point of view, each room holds one course).

This report includes
 no block

This report excludes courses with no Bldg Code,
 courses with no enrollment, courses not in session on
 1/30/2006, courses with no begin time. Optionally may exclude
 "block" courses.

BLDG_C ODE	BLDG_NAME	Campus Id of Bldg	FAC TYPE	UNIV OWN COD E	Capc _ind	Room Capacity	Seats Used in One Week	Nbr Rooms Used	Hours Used per Week	Course Count
EGF	NTC East Grand Forks	265	110	O	FCR	1,462	19,422	31	1,038	289
			210	O	FCR	926	5,718	22	472	100
TRF	Main Building	303	110	O	FCR	902	7,270	23	459	136
			210	O	FCR	291	3,063	13	296	64
TRF_AV	Airport Campus	303	110	O	FCR	220	3,073	7	192	28
			210	O	FCR	68	399	3	33	7
TRF_SH	Swenson Hangar	303	210	O	FCR	10	80	1	4	1
Total						3,879	39,025	100	2,494	625

FY 2007

Northland College

265

E Grand Fork

Room Capacity 2,388

Seats Available in 32-Hour Week 76,416

Seats Used in One Week 25,140

Seat Usage Percent 33%

$$\text{Seat Usage Percent} = (\text{Seats_Used} / \text{Seats_Avail_32_hour_week}) * 100$$

Nbr Rooms Used 53

Rooms * 32 Hours 1,696

Hours Used Per Week 1,510

Hours Usage Percent 89%

$$\text{Hours Usage Percent} = (\text{Hours_Used_per_Week} / \text{Rooms_32_Hours}) * 100$$

Course Count 389

Totals by Campus

Bldg Count 1

Room Count 53

Building and Room List -
CAMPUS

BLDG_CO DE	BLDG_NAME	Camp us Id of Bldg	ROOM_ NBR	ROOM_NAME	Capo _ind	Room Capacity	Seats Used in One Week	Nbr Rooms Used	Hours Used per Week	Course Count
EGF	NTC East Grand Forks	265	124	Classroom - wired	FCR	30	84	1	4	1
			210	Classroom - wired	FCR	40	698	1	35	9
			211	Lab - Surgical Tec	FCR	15	81	1	8	4
			217	Classroom - wired	FCR	30	199	1	14	5
			218	Classroom - wired	FCR	32	575	1	25	8
			219	Classroom - wired	FCR	32	513	1	30	9
			222	Lab - Clinclal Labo	FCR	14	72	1	6	3
			228	Lab - Computer Sc	FCR	28	559	1	29	7
			229	Lab - Cardiovascu	FCR	10	68	1	12	2
			231	Classroom - wired	FCR	28	594	1	29	9
			234	Classroom - wired	FCR	48	1,372	1	43	15
			236	Classroom	FCR	40	827	1	31	9
			237	ITV - wired	FCR	24	416	1	26	8
			238	Classroom - wired	FCR	30	419	1	22	8
			239	Classroom - wired	FCR	32	404	1	32	8
			301	Classroom	FCR	24	615	1	31	7
			305A	Classroom - wired	FCR	40	815	1	29	10
			305B	Classroom - wired	FCR	40	320	1	24	11
			306A	Classroom	FCR	30	488	1	36	7
			308	Lab - Nursing	FCR	12	86	1	10	3
			308A	Lab - Medical Assi	FCR	12	130	1	40	4
			311	Conference Ctr W	FCR	28	310	1	19	7
			312	Lab - Pharmacy	FCR	20	122	1	17	4
			316	Lab - Occupationa	FCR	12	250	1	30	9
			317	Conference Ctr W	FCR	28	173	1	14	6
			320	Lab - Respiratory	FCR	24	192	1	24	4
			323	Lab - Science - wi	FCR	24	90	1	6	1
			327	Lab - Science - wi	FCR	24	12	1	4	1
			329	Classroom - wired	FCR	36	632	1	35	16

BLDG_CODE	BLDG_NAME	Campus Id of Bldg	ROOM_NBR	ROOM_NAME	Capc Ind	Room Capacity	Seats Used in One Week	Nbr Rooms Used	Hours Used per Week	Course Count
			331	Classroom - wired	FCR	36	821	1	25	6
			335	Lab - Early Childh	FCR	20	81	1	7	4
			337	Classroom	FCR	40	1,514	1	51	14
			339	Classroom	FCR	40	1,318	1	40	11
			341	Classroom	FCR	40	1,610	1	59	16
			401	Classroom - wired	FCR	32	429	1	21	9
			402A	Lab - Heating Ven	FCR	20	286	1	19	7
			402B	Lab - Plumbing	FCR	20	403	1	25	5
			402C	Lab - Construction	FCR	20	412	1	24	7
			410	Lab - Welding	FCR	20	644	1	29	5
			419	Lab - Auto Service	FCR	16	497	1	30	4
			421A	Classroom	FCR	40	727	1	35	9
			421B	Lab - Const Elec a	FCR	25	176	1	10	3
			436	ITV - wired	FCR	18	305	1	30	10
			437	Classroom - wired	FCR	24	301	1	18	11
			440	Lab - Auto Service	FCR	30	288	1	18	3
			501	Lab - Fire Tech &	FCR	30	331	1	37	8
			504	Lab - Carpentry	FCR	30	252	1	14	2
			506	Classroom	FCR	16	636	1	50	12
			507	Classroom	FCR	20	294	1	25	6
			508	Classroom	FCR	40	516	1	53	13
			HWL	Classroom - Fine /	FCR	24	194	1	10	2
			SITE	Job Site	FCR	500	686	1	73	10
			TBA	To Be Announced	FCR	500	1,303	1	142	17
Total						2,388	25,140	53	1,510	389

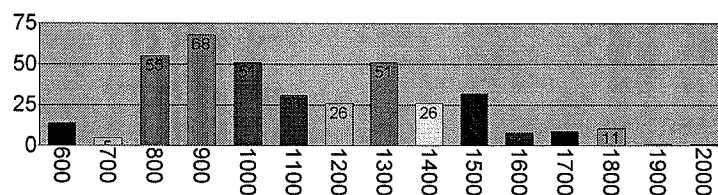
265

E Grand Fork

Northland College

Total count uniquecourse

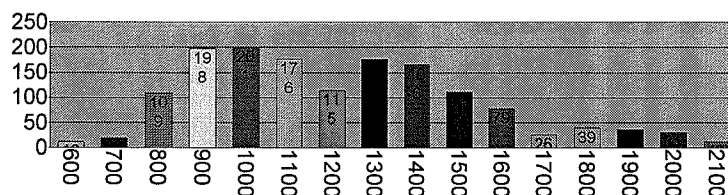
(a) Courses by Starting Hour



Starting Hour of Course

Total Computed_all_days

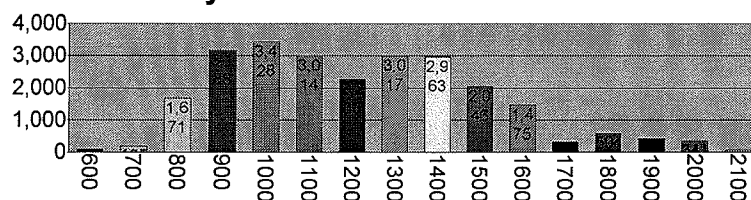
(b) Hours/Courses When Bldg/Room is in Use by Hours in Session



CLASS_INCL_HOUR

Total Seats

(c) Seats Occupied Weekly Total by Hours in Session



CLASS_INCL_HOUR

FY 2007

Northland College

303

Thief River

Room Capacity 1,491

Seats Available in 32-Hour Week 47,712

Seats Used in One Week 13,885

Seat Usage Percent 29%

$$\text{Seat Usage Percent} = (\text{Seats_Used} / \text{Seats_Avail_32_hour_week}) * 100$$

Nbr Rooms Used 47

Rooms * 32 Hours 1,504

Hours Used Per Week 984

Hours Usage Percent 65%

$$\text{Hours Usage Percent} = (\text{Hours_Used_per_Week} / \text{Rooms_32_Hours}) * 100$$

Course Count 236

Totals by Campus

Bldg Count 3

Room Count 47

Building and Room List -
CAMPUS

BLDG_CO DE	BLDG_NAME	Campus Id of Bldg	ROOM NBR	ROOM_NAME	Cap ind	Room Capacity	Seats Used in One Week	Nbr Rooms Used	Hours Used per Week	Course Count
TRF	Main Building	303	105	Lab - Biology	FCR	37	24	1	1	1
			109	Classroom - Natur	FCR	30	24	1	10	3
			115	Classroom	FCR	30	230	1	18	5
			117	Classroom	FCR	50	481	1	21	7
			201	Classroom	FCR	55	642	1	25	8
			203	Classroom	FCR	55	431	1	14	5
			215	Classroom	FCR	30	260	1	18	6
			219	Classroom	FCR	28	224	1	18	5
			225	Classroom	FCR	42	714	1	35	11
			263	Lab - Computer	FCR	24	343	1	21	5
			323	Classroom	FCR	32	215	1	15	4
			325	ITV (middle)	FCR	45	307	1	30	9
			329	ITV (corner)	FCR	34	128	1	28	9
			407	Music-Band Rehe	FCR	50	253	1	14	5
			431	Art Room	FCR	14	84	1	6	1
			445	Lab - Art	FCR	28	45	1	3	1
			515	Classroom	FCR	46	516	1	25	7
			601	Classroom (SS An	FCR	54	583	1	21	8
			603	Lab - Computer	FCR	24	237	1	38	9
			605	Lab - Computer	FCR	24	144	1	13	6
			623	Lab - Radio/TV Br	FCR	9	98	1	14	3
			627	Classroom - Nursi	FCR	46	501	1	25	7
			629	Classroom - Nursi	FCR	11	38	1	2	1
			631	Lab - Nursing	FCR	15	266	1	22	5
			651	Lab - Welding	FCR	25	281	1	25	6
			655	Lab - Cosmetology	FCR	32	458	1	55	9
			701	Classroom	FCR	42	262	1	23	9
			703	Classroom	FCR	46	271	1	18	8
			705	Lab - Architectural	FCR	20	220	1	20	3

BLDG_CODE	BLDG_NAME	Campus Id of Bldg	ROOM_NBR	ROOM_NAME	Capc ind	Room Capacity	Seats Used in One Week	Nbr Rooms Used	Hours Used per Week	Course Count
			706	Lab - Architectural	FCR	15	306	1	28	5
			707	Lab - Architectural	FCR	24	345	1	30	6
			715	Classroom - Auto	FCR	22	451	1	28	4
			719C	Lab - Auto Body II	FCR	14	296	1	26	5
			723	Classroom - Auto	FCR	20	151	1	22	4
			729	Classroom - Auto	FCR	20	266	1	23	5
			ARR	Arranged	FCR	100	238	1	20	5
TRF_AV	Airport Campus	303	AC10	Classroom - Aviati	FCR	28	216	1	24	2
			AC12	Classroom - Aviati	FCR	48	702	1	34	9
			AC13	Lab - Electronics	FCR	26	308	1	26	4
			AC14	Classroom - Elect	FCR	24	569	1	29	4
			AC2	Classroom - Aviati	FCR	24	506	1	32	3
			AC3	Classroom - Aviati	FCR	22	329	1	19	2
			AC6	Lab - Aviation	FCR	18	27	1	3	1
			AC7	Lab - Computer	FCR	24	64	1	4	2
			AC8	Classroom - Aviati	FCR	48	306	1	26	3
			AC9	Classroom - Aviati	FCR	26	445	1	28	5
TRF_SH	Swenson Hang	303	130	Garage - Swensor	FCR	10	80	1	4	1
Total						1,491	13,885	47	984	236

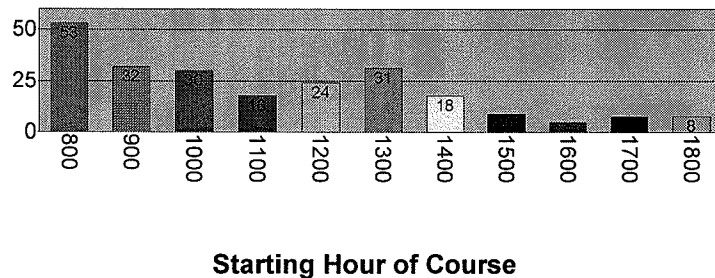
303

Thief River

Northland College

Total count uniquecourse

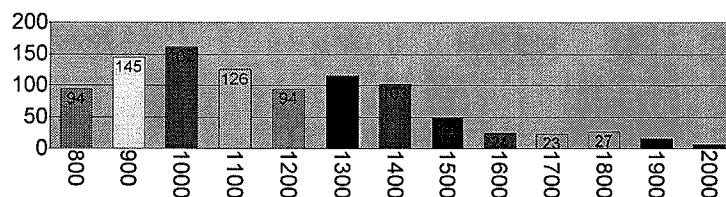
(a) Courses by Starting Hour



Starting Hour of Course

Total Computed_all_days

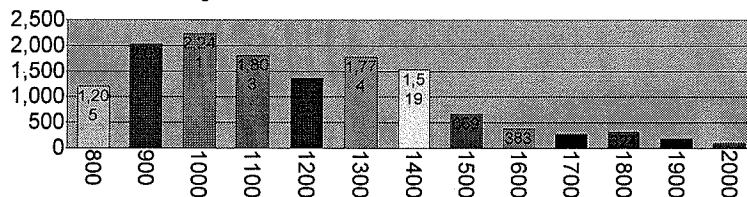
(b) Hours/Courses When Bldg/Room is in Use by Hours in Session



CLASS_INCL_HOUR

Total Seats

(c) Seats Occupied Weekly Total by Hours in Session



CLASS_INCL_HOUR

Bldg Code **EGF****NTC East Grand Forks****Northland College**

Room Capacity	2,388	Nbr Rooms Used	53	
Fac Type 110, 210	Seats Available in 32-Hour Week	76,416	Rooms * 32 Hours	1,696
Classroom Lab, Lecture Classroom	Seats Used in One Week	25,140	Hours Used Per Week	1,510
O	Seat Usage Percent	33%	Hours Usage Percent	89% *
265 E Grand Fork			Course Count	389

BLDG TOTALS
Totals; Rooms**Totals by Building**

20075

Room Count 53

*

If Hours Usage Percent (above) is greater than 100%, see list of courses held in this building (below) and/or see "Bldg and Room Totals" Report; verify location and time. Changes must be made within the ISRS system and the DataWarehouse staff must be notified to repull the data.

Rooms in This Building

BLDG_CODE	ROOM_NBR	ROOM_NAME	Capc_ind	MULTIPLIER -UNIQUE-R	Seats Avail 32 hr	Seats Used in One Week	Seat Usage Percent	Nbr of Rooms	Rooms * 32 Hours	Hours Used per Week	Hours Usage Percent	Course Count
EGF	124	Classroom - wirec	FCR	30	960	84	9%	1	32	4	13%	1
	210	Classroom - wirec	FCR	40	1,280	698	55%	1	32	35	109%	9
	211	Lab - Surgical Te	FCR	15	480	81	17%	1	32	8	25%	4
	217	Classroom - wirec	FCR	30	960	199	21%	1	32	14	44%	5
	218	Classroom - wirec	FCR	32	1,024	575	56%	1	32	25	78%	8
	219	Classroom - wirec	FCR	32	1,024	513	50%	1	32	30	94%	9
	222	Lab - Clinical Lab	FCR	14	448	72	16%	1	32	6	19%	3
	228	Lab - Computer S	FCR	28	896	559	62%	1	32	29	91%	7
	229	Lab - Cardiovasc	FCR	10	320	68	21%	1	32	12	38%	2
	231	Classroom - wirec	FCR	28	896	594	66%	1	32	29	91%	9
	234	Classroom - wirec	FCR	48	1,536	1,372	89%	1	32	43	134%	15
	236	Classroom	FCR	40	1,280	827	65%	1	32	31	97%	9
	237	ITV - wired	FCR	24	768	416	54%	1	32	26	81%	8
	238	Classroom - wirec	FCR	30	960	419	44%	1	32	22	69%	8
	239	Classroom - wirec	FCR	32	1,024	404	39%	1	32	32	100%	8
	301	Classroom	FCR	24	768	615	80%	1	32	31	97%	7
	305A	Classroom - wirec	FCR	40	1,280	815	64%	1	32	29	91%	10
	305B	Classroom - wirec	FCR	40	1,280	320	25%	1	32	24	75%	11
	306A	Classroom	FCR	30	960	488	51%	1	32	36	113%	7
	308	Lab - Nursing	FCR	12	384	86	22%	1	32	10	31%	3
	308A	Lab - Medical Ass	FCR	12	384	130	34%	1	32	40	125%	4
	311	Conference Ctr W	FCR	28	896	310	35%	1	32	19	59%	7
	312	Lab - Pharmacy	FCR	20	640	122	19%	1	32	17	53%	4
	316	Lab - Occupation	FCR	12	384	250	65%	1	32	30	94%	9
	317	Conference Ctr W	FCR	28	896	173	19%	1	32	14	44%	6
	320	Lab - Respiratory	FCR	24	768	192	25%	1	32	24	75%	4
	323	Lab - Science - w	FCR	24	768	90	12%	1	32	6	19%	1
	327	Lab - Science - w	FCR	24	768	12	2%	1	32	4	13%	1
	329	Classroom - wirec	FCR	36	1,152	632	55%	1	32	35	109%	16
	331	Classroom - wirec	FCR	36	1,152	821	71%	1	32	25	78%	6

(short rpt) Bldg Totals - short form

BLDG CODE	ROOM NBR	ROOM_NAME	Capc _ind	MULTI PLIER -UNIQ UE-R	Seats Avail 32 hr	Seats Used in One Week	Seat Usage Percent	Nbr of Rooms	Rooms * 32 Hours	Hours Used per Week	Hours Usage Percent	Course Count
	335	Lab - Early Childh	FCR	20	640	81	13%	1	32	7	22%	4
	337	Classroom	FCR	40	1,280	1,514	118%	1	32	51	159%	14
	339	Classroom	FCR	40	1,280	1,318	103%	1	32	40	125%	11
	341	Classroom	FCR	40	1,280	1,610	126%	1	32	59	184%	16
	401	Classroom - wirec	FCR	32	1,024	429	42%	1	32	21	66%	9
	402A	Lab - Heating Ver	FCR	20	640	286	45%	1	32	19	59%	7
	402B	Lab - Plumbing	FCR	20	640	403	63%	1	32	25	78%	5
	402C	Lab - Construction	FCR	20	640	412	64%	1	32	24	75%	7
	410	Lab - Welding	FCR	20	640	644	101%	1	32	29	91%	5
	419	Lab - Auto Service	FCR	16	512	497	97%	1	32	30	94%	4
	421A	Classroom	FCR	40	1,280	727	57%	1	32	35	109%	9
	421B	Lab - Const Elec	FCR	25	800	176	22%	1	32	10	31%	3
	436	ITV - wired	FCR	18	576	305	53%	1	32	30	94%	10
	437	Classroom - wirec	FCR	24	768	301	39%	1	32	18	56%	11
	440	Lab - Auto Service	FCR	30	960	288	30%	1	32	18	56%	3
	501	Lab - Fire Tech &	FCR	30	960	331	34%	1	32	37	116%	8
	504	Lab - Carpentry	FCR	30	960	252	26%	1	32	14	44%	2
	506	Classroom	FCR	16	512	636	124%	1	32	50	156%	12
	507	Classroom	FCR	20	640	294	46%	1	32	25	78%	6
	508	Classroom	FCR	40	1,280	516	40%	1	32	53	166%	13
	HWL	Classroom - Fine	FCR	24	768	194	25%	1	32	10	31%	2
	SITE	Job Site	FCR	500	16,000	686	4%	1	32	73	228%	10
	TBA	To Be Announc	FCR	500	16,000	1,303	8%	1	32	142	444%	17
Total				2,388	76,416	25,140	33%	53	1,696	1,510	89%	389

Bldg Code **TRF****Main Building****Northland College**

Room Capacity	1,193	Nbr Rooms Used	36
Fac Type 110, 210	Seats Available in 32-Hour Week	38,176	Rooms * 32 Hours
Classroom Lab, Lecture Classroom	Seats Used in One Week	10,333	Hours Used Per Week
O	Seat Usage Percent	27%	Hours Usage Percent
303 Thief River			66% *
		Course Count	200

BLDG TOTALS
Totals; Rooms**Totals by Building**

20075

Room Count 36

*

If Hours Usage Percent (above) is greater than 100%, see list of courses held in this building (below) and/or see "Bldg and Room Totals" Report; verify location and time. Changes must be made within the ISRS system and the DataWarehouse staff must be notified to repull the data.

Rooms in This Building

BLDG CODE	ROOM_NBR	ROOM_NAME	Capc_ind	MULTIPLIER -UNIQUE-R	Seats Avail 32 hr	Seats Used in One Week	Seat Usage Percent	Nbr of Rooms	Rooms * 32 Hours	Hours Used per Week	Hours Usage Percent	Course Count
TRF	105	Lab - Biology	FCR	37	1,184	24	2%	1	32	1	3%	1
	109	Classroom - Natu	FCR	30	960	24	3%	1	32	10	31%	3
	115	Classroom	FCR	30	960	230	24%	1	32	18	56%	5
	117	Classroom	FCR	50	1,600	481	30%	1	32	21	66%	7
	201	Classroom	FCR	55	1,760	642	36%	1	32	25	78%	8
	203	Classroom	FCR	55	1,760	431	24%	1	32	14	44%	5
	215	Classroom	FCR	30	960	260	27%	1	32	18	56%	6
	219	Classroom	FCR	28	896	224	25%	1	32	18	56%	5
	225	Classroom	FCR	42	1,344	714	53%	1	32	35	109%	11
	263	Lab - Computer	FCR	24	768	343	45%	1	32	21	66%	5
	323	Classroom	FCR	32	1,024	215	21%	1	32	15	47%	4
	325	ITV (middle)	FCR	45	1,440	307	21%	1	32	30	94%	9
	329	ITV (corner)	FCR	34	1,088	128	12%	1	32	28	88%	9
	407	Music-Band Rehe	FCR	50	1,600	253	16%	1	32	14	44%	5
	431	Art Room	FCR	14	448	84	19%	1	32	6	19%	1
	445	Lab - Art	FCR	28	896	45	5%	1	32	3	9%	1
	515	Classroom	FCR	46	1,472	516	35%	1	32	25	78%	7
	601	Classroom (SS A)	FCR	54	1,728	583	34%	1	32	21	66%	8
	603	Lab - Computer	FCR	24	768	237	31%	1	32	38	119%	9
	605	Lab - Computer	FCR	24	768	144	19%	1	32	13	41%	6
	623	Lab - Radio/TV B	FCR	9	288	98	34%	1	32	14	44%	3
	627	Classroom - Nurs	FCR	46	1,472	501	34%	1	32	25	78%	7
	629	Classroom - Nurs	FCR	11	352	38	11%	1	32	2	6%	1
	631	Lab - Nursing	FCR	15	480	266	55%	1	32	22	69%	5
	651	Lab - Welding	FCR	25	800	281	35%	1	32	25	78%	6
	655	Lab - Cosmetolog	FCR	32	1,024	458	45%	1	32	55	172%	9
	701	Classroom	FCR	42	1,344	262	19%	1	32	23	72%	9
	703	Classroom	FCR	46	1,472	271	18%	1	32	18	56%	8
	705	Lab - Architectura	FCR	20	640	220	34%	1	32	20	63%	3
	706	Lab - Architectura	FCR	15	480	306	64%	1	32	28	88%	5

(short rpt) Bldg Totals - short form

BLDG CODE	ROOM NBR	ROOM_NAME	Capc _ind	MULTI PLIER -UNIQ UE-R	Seats Avail 32 hr	Seats Used in One Week	Seat Usage Percent	Nbr of Rooms	Rooms * 32 Hours	Hours Used per Week	Hours Usage Percent	Course Count
	707	Lab - Architectura	FCR	24	768	345	45%	1	32	30	94%	6
	715	Classroom - Auto	FCR	22	704	451	64%	1	32	28	88%	4
	719C	Lab - Auto Body I	FCR	14	448	296	66%	1	32	26	81%	5
	723	Classroom - Auto	FCR	20	640	151	24%	1	32	22	69%	4
	729	Classroom - Auto	FCR	20	640	266	42%	1	32	23	72%	5
	ARR	Arranged	FCR	100	3,200	238	7%	1	32	20	63%	5
Total				1,193	38,176	10,333	27%	36	1,152	755	66%	200

Bldg Code **TRF_AV** **Airport Campus****Northland College**

Room Capacity	288	Nbr Rooms Used	10
Fac Type 110, 210	Seats Available in 32-Hour Week	9,216	Rooms * 32 Hours
Classroom Lab, Lecture Classroom	Seats Used in One Week	3,472	Hours Used Per Week
O	Seat Usage Percent	38%	Hours Usage Percent
303 Thief River			70% *
		Course Count	35

BLDG TOTALS
Totals; Rooms**Totals by Building**

20075

Room Count 10

*

If Hours Usage Percent (above) is greater than 100%, see list of courses held in this building (below) and/or see "Bldg and Room Totals" Report; verify location and time. Changes must be made within the ISRS system and the DataWarehouse staff must be notified to repull the data.

Rooms in This Building

BLDG_CODE	ROOM_NBR	ROOM_NAME	Capc_ind	MULTIPLIER-UNIQUE-R	Seats Avail 32 hr	Seats Used in One Week	Seat Usage Percent	Nbr of Rooms	Rooms * 32 Hours	Hours Used per Week	Hours Usage Percent	Course Count
TRF_AV	AC10	Classroom - Aviat	FCR	28	896	216	24%	1	32	24	75%	2
	AC12	Classroom - Aviat	FCR	48	1,536	702	46%	1	32	34	106%	9
	AC13	Lab - Electronics	FCR	26	832	308	37%	1	32	26	81%	4
	AC14	Classroom - Elect	FCR	24	768	569	74%	1	32	29	91%	4
	AC2	Classroom - Aviat	FCR	24	768	506	66%	1	32	32	100%	3
	AC3	Classroom - Aviat	FCR	22	704	329	47%	1	32	19	59%	2
	AC6	Lab - Aviation	FCR	18	576	27	5%	1	32	3	9%	1
	AC7	Lab - Computer	FCR	24	768	64	8%	1	32	4	13%	2
	AC8	Classroom - Aviat	FCR	48	1,536	306	20%	1	32	26	81%	3
	AC9	Classroom - Aviat	FCR	26	832	445	53%	1	32	28	88%	5
Total				288	9,216	3,472	38%	10	320	225	70%	35

Bldg Code **TRF_SH Swenson Hangar****Northland College**

Fac Type 210	Room Capacity	10	Nbr Rooms Used	1
Classroom Lab	Seats Available in 32-Hour Week	320	Rooms * 32 Hours	32
O	Seats Used in One Week	80	Hours Used Per Week	4
303 Thief River	Seat Usage Percent	25%	Hours Usage Percent	13% *
			Course Count	1

BLDG TOTALS
Totals; Rooms**Totals by Building**

20075

Room Count 1

*

If Hours Usage Percent (above) is greater than 100%, see list of courses held in this building (below) and/or see "Bldg and Room Totals" Report; verify location and time. Changes must be made within the ISRS system and the DataWarehouse staff must be notified to repull the data.

Rooms in This Building

BLDG CODE	ROOM NBR	ROOM_NAME	Capc ind	MULTIPLIER -UNIQUE-R	Seats Avail 32 hr	Seats Used in One Week	Seat Usage Percent	Nbr of Rooms	Rooms * 32 Hours	Hours Used per Week	Hours Usage Percent	Course Count
TRF_SH	130	Garage - Swenso	FCR	10	320	80	25%	1	32	4	13%	1
Total				10	320	80	25%	1	32	4	13%	1