



Northwest Service Cooperative

114 First Street West
Thief River Falls, MN 56701-1911
218-681-0900
218-681-0915 (fax)
www.nw-service.k12.mn.us

**"Your Resource and
Learning Partner"**

NWSC Environmental Health & Safety

Summary Report

► **CLIENT:** NCTC – TRF MAIN CAMPUS
► **DATE:** Sept. 22, 2017
► **CONDUCTED BY:** BRIAN BYKLUM

Conducted a mock OSHA inspection and noted the following:

1. The breakers in the main panel in Rm 640 are not labeled as to what they control.

Welding

2. There are no chuck guards on the lathes. Purchase and install.
3. There is no chip shield on the milling machines. Purchase and install.
4. There is a damaged strain relief on a welder cord in booth 10.
5. A 4" grinder is missing the cup guard, install guard.
6. The Ellis horizontal bandsaw has an exposed blade, blade guard has to be adjust every time you cut a different size stock.
7. The cord for the foot pedal of the HTE shear is damaged.
8. Unlabeled secondary containers were noted. Containers must have name of product and any hazard warnings.
9. The exit to the east is blocked with material on the exterior of the building (see photo).

Autobody 717

10. The Rockwell pedestal grinder must either be anchored to the floor or have a larger base to prevent "walking" when in use.
11. Hoses must be put away at end of the day or they present a tripping hazard.
12. There is a blocked exit, this must remain clear at all times.
13. The fire extinguisher is blocked.
14. There is no cup guard on a Flex 7" grinder. Install guard.
15. The coating on an orange extension cord was damaged, recommend it be removed or repaired.

Autobody 719

16. A coffee was plugged into a power strip and also not commercially UL listed.
17. An unapproved air nozzle was noted. Max outlet pressure can not exceed 30 psi.
18. Unlabeled secondary containers were noted in the flammables cabinet.
19. A red extension cord was missing the ground pin. Replace the plug end.
20. The drill press is not equipped with a chip shield.
21. The respirator is not stored properly. Must be cleaned, dried and stored in a dust free environment.
22. The sprinkler head in the paint booth is covered with a paperbag that is held in place with a nylon zip tie. Recommend that the zip tie be removed and a rubber band be used instead.
23. There are no safety clips on the hooks of the cherry picker.

Auto Mechanics

24. An extension cord was plugged into a power strip in Rm 723.
25. Hoses not picked up, no chip shield on drill press and there are no tire changing posters in Rm 729.
26. There is a taped strain relief on a drop cord.
27. A metal box with broken blade guards was noted, recommend that it be disposed of.
28. No chip shield on Jet table top drill press.
29. The combustible rag can was lined with a plastic bag.

Receiving

30. A six way plug adapter was noted in the maintenance office.
31. Housekeeping on the work bench needs work.
32. There is no chip shield on the bench top drill press.
33. A damaged strain relief was noted on a floor buffer.
34. Wood dust was present on the floor and around the miter saw, recommend that this be cleaned after each use.
35. A damaged strain relief was noted on a battery charger in Rm 520C.
36. The portable eyewash in Rm 520C has not been changed per manufacturer recommendations and has not been inspected weekly.
37. The LP cylinder on the forklift was not shut off. This must be turned off after each use.

Grounds

38. There are no anti-flashback devices on the torch.
39. Two 20 lb LP cylinders were being stored in the garage, these must be stored outside.
40. Secondary containers not labeled in main building garage.
41. An unapproved air nozzle was noted in the main building garage.

Misc Rms

42. A box fan with a broken blade guard noted in Rm 431.
43. Rm 407A had missing ceiling tile and storage height issues.
44. A junction box with no cover was noted in Rm 410.
45. Rm 240 has housekeeping issues and the portable eyewash has not been changed according to manufacturer.
46. An open floor hole was noted in Rm 230. Ensure the cover is put back on.



1



2



3



4



5



6



7



8



10



11



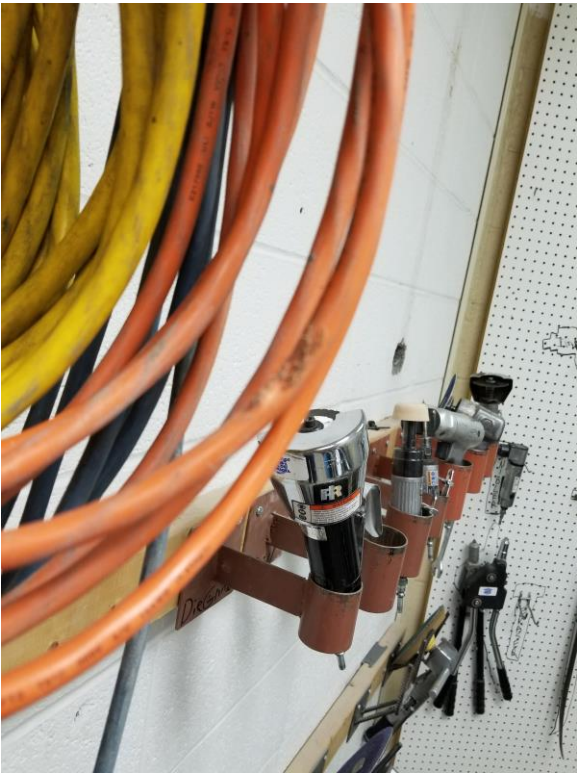
12



13



14



15



16



17



18



19



20



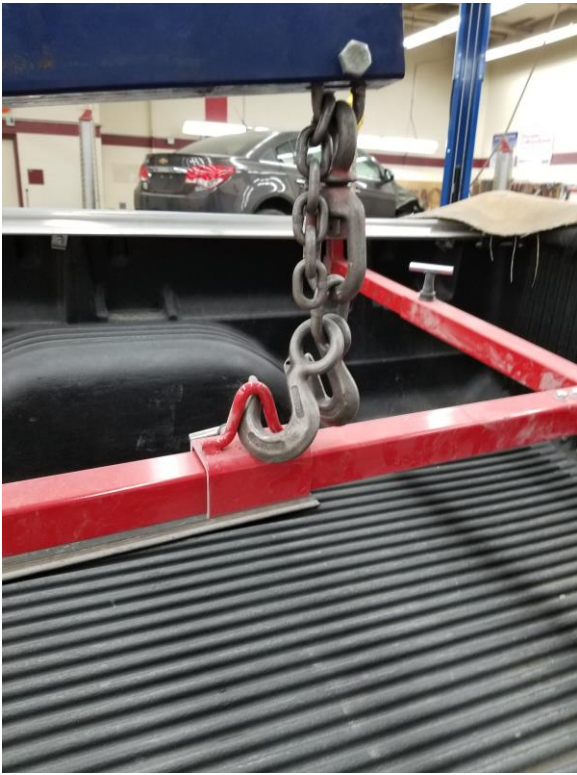
21



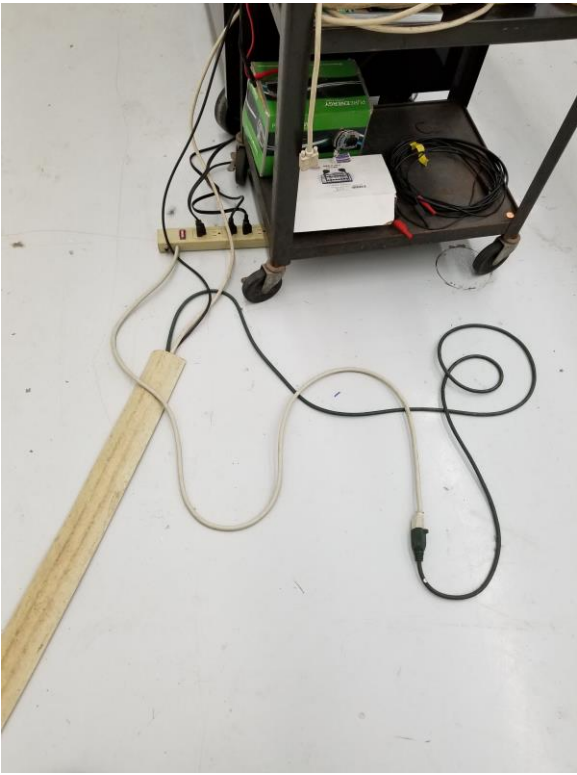
22



18



23



24

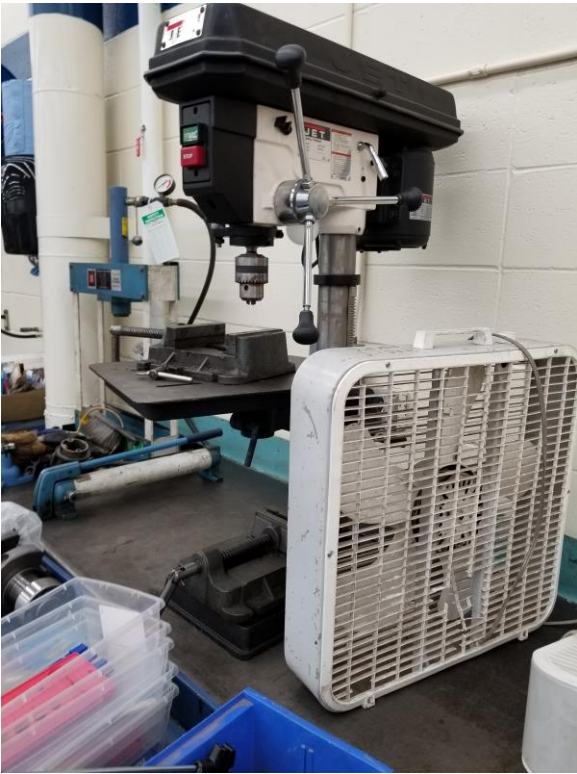


25





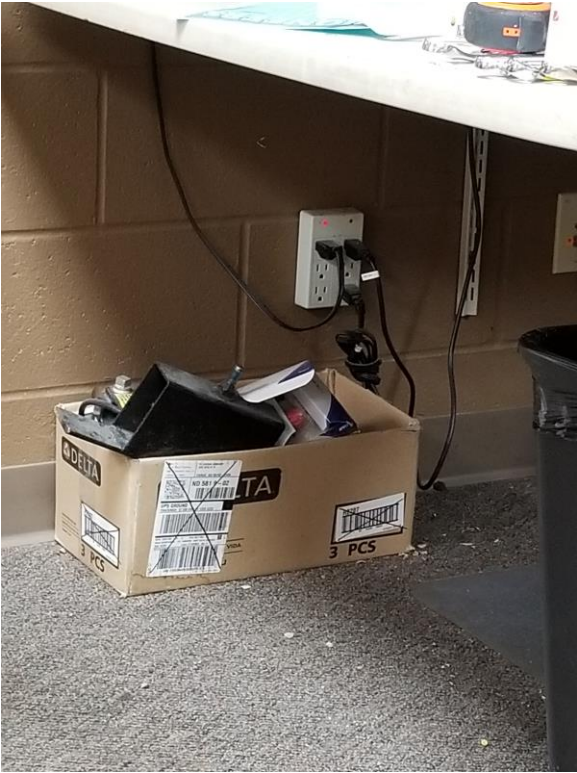
26



27, 28



29



30



31, 32



33



34



35



38



39



42



43



44



45



46